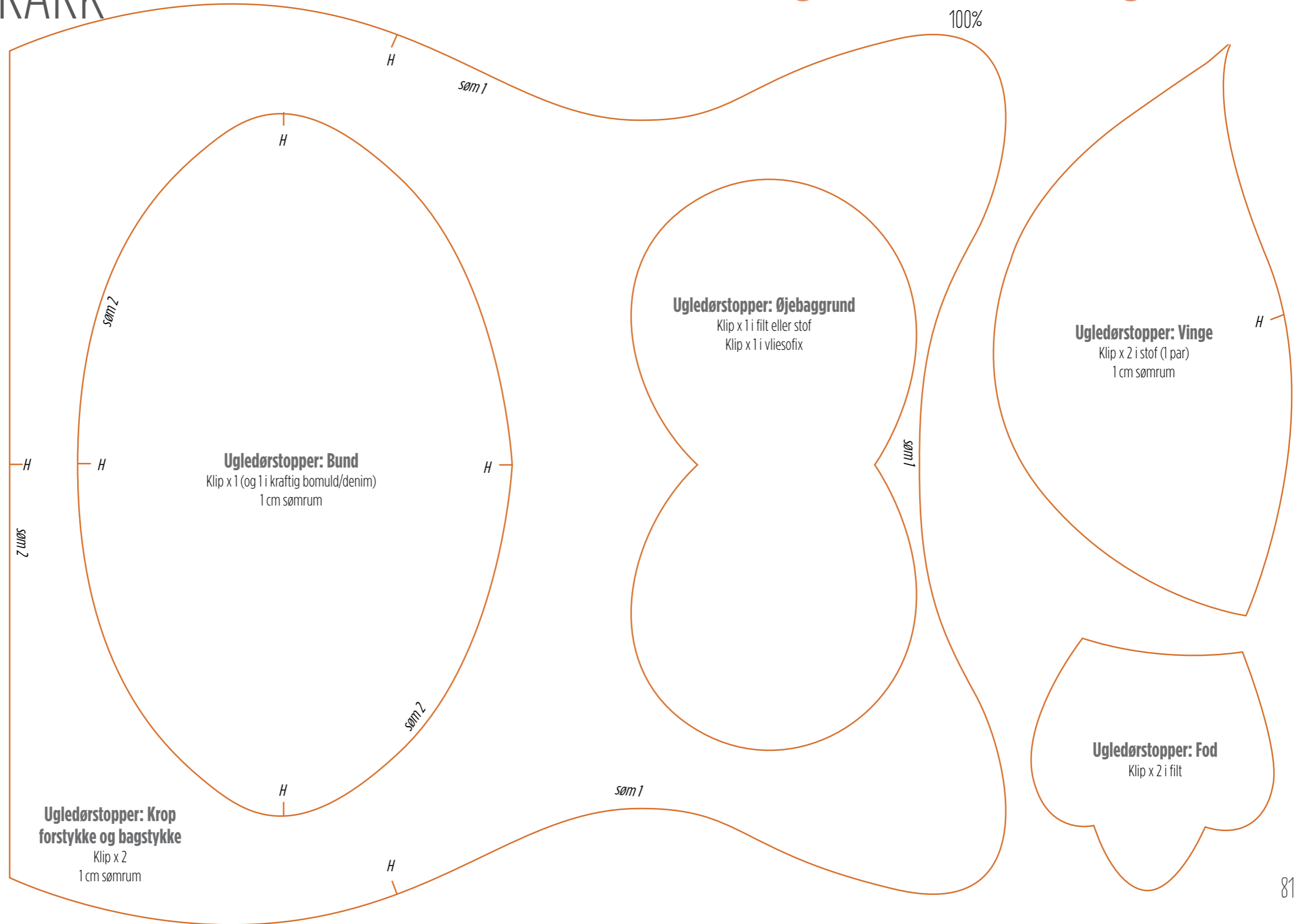
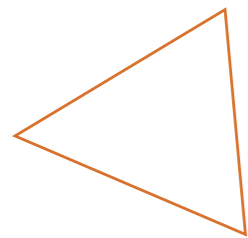


# MØNSTERARK

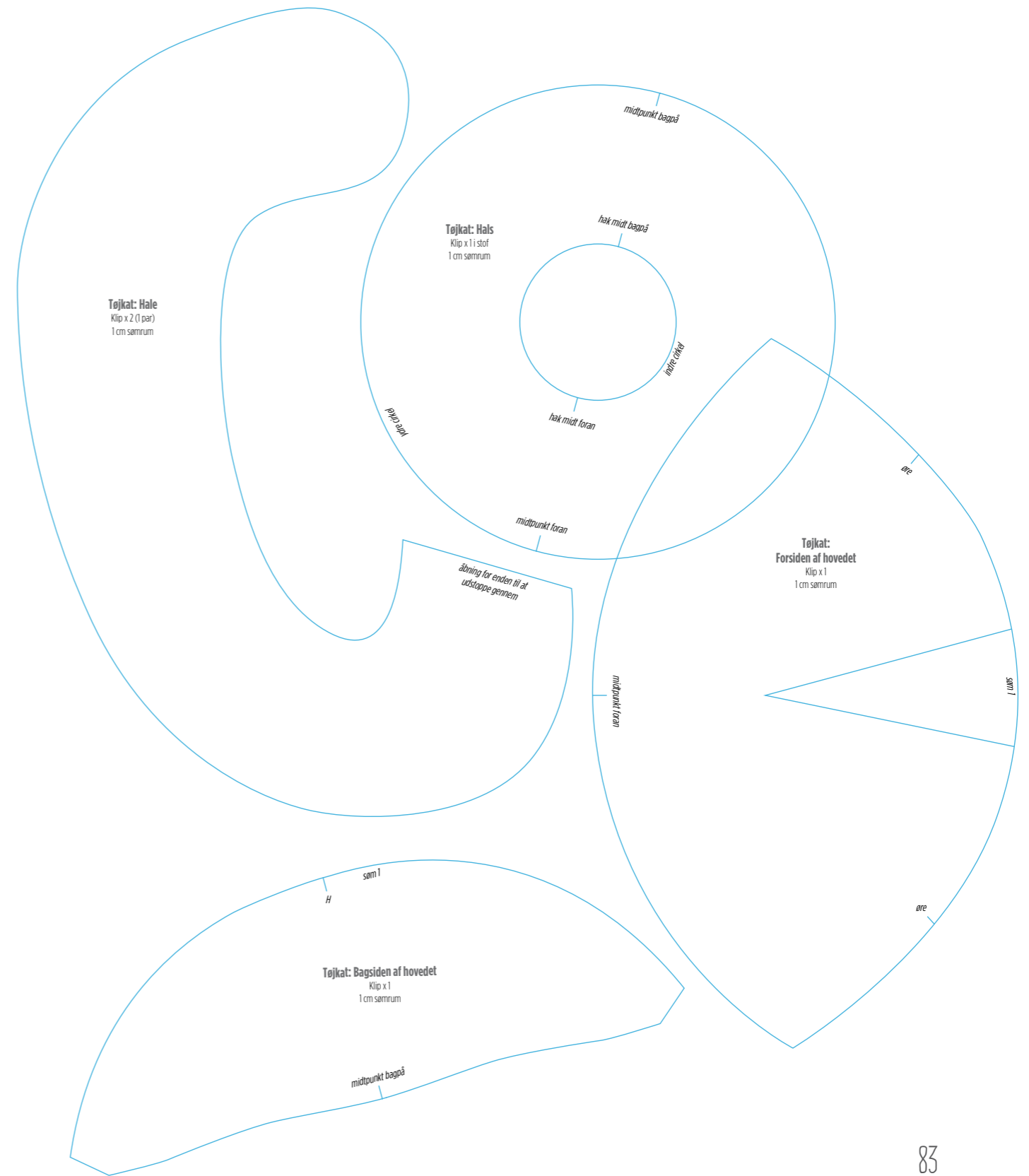
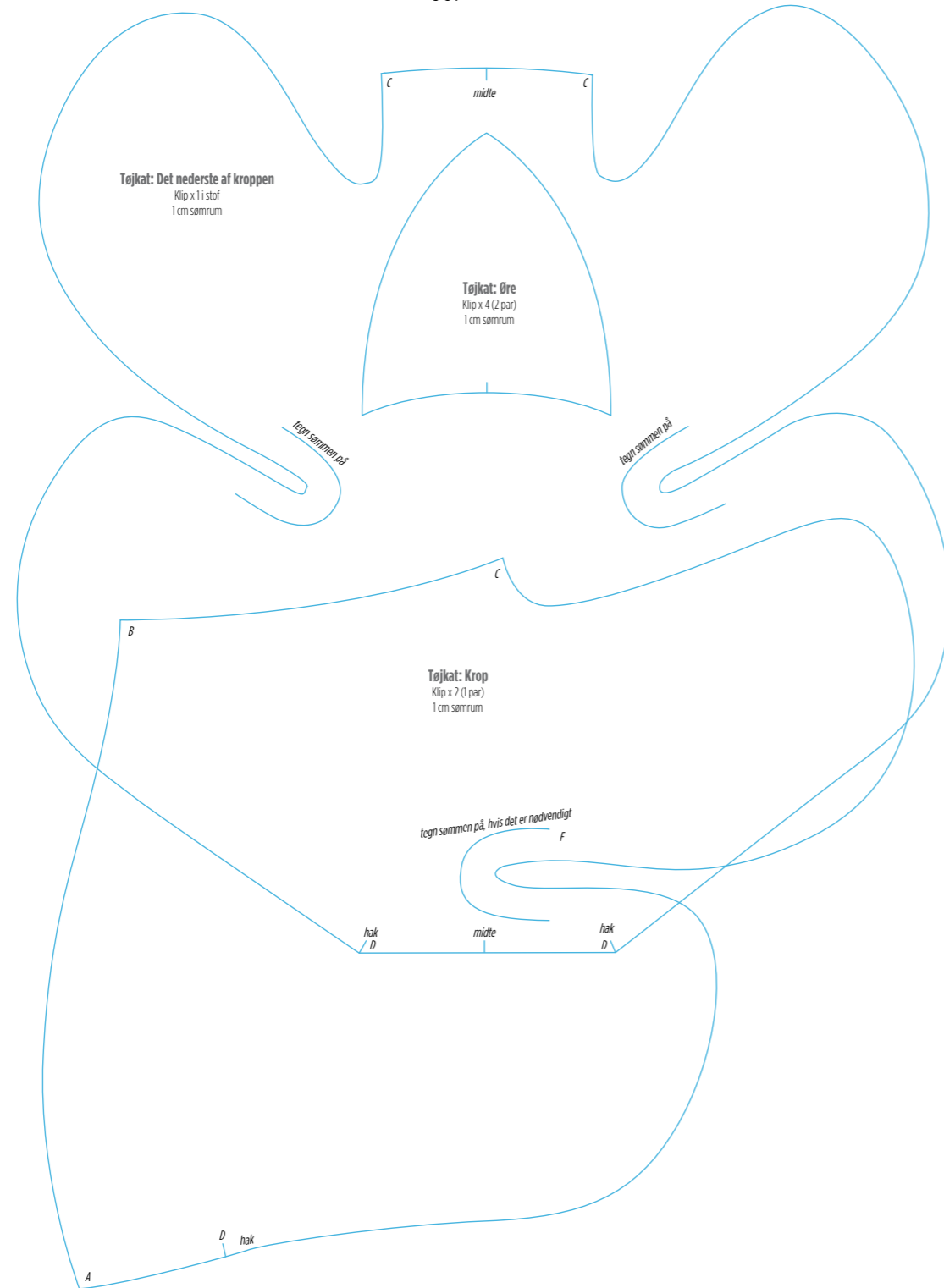
● UGLEDØRSTOPPER: 6 MØNSTERDELE ●

100%



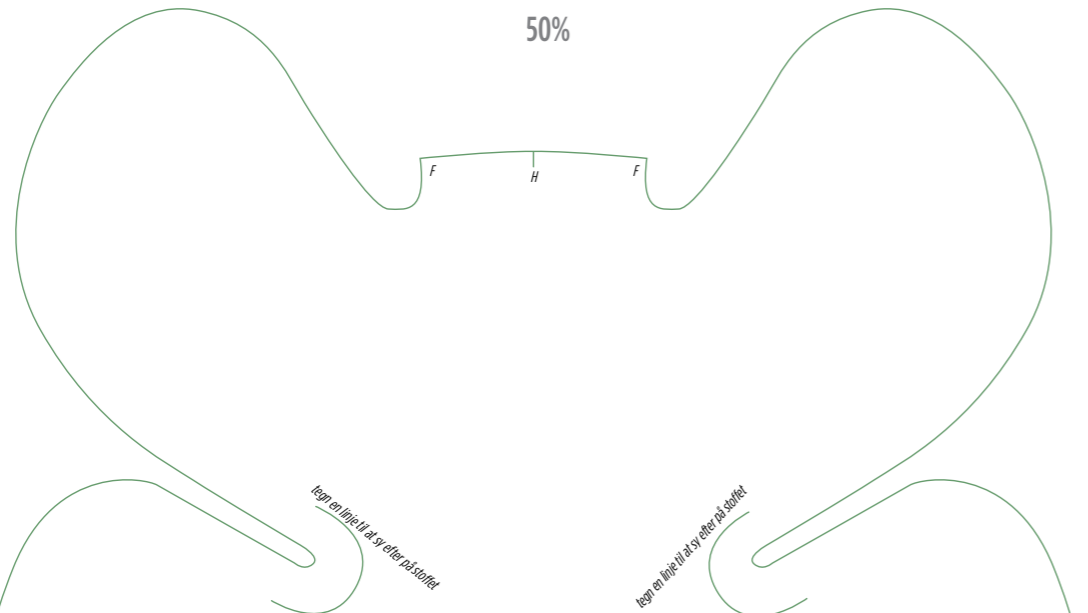
● **TØJKAT: 7 MØNSTERDELE** ●

50%



# TØJHUND: 6 MØNSTERDELE

50%



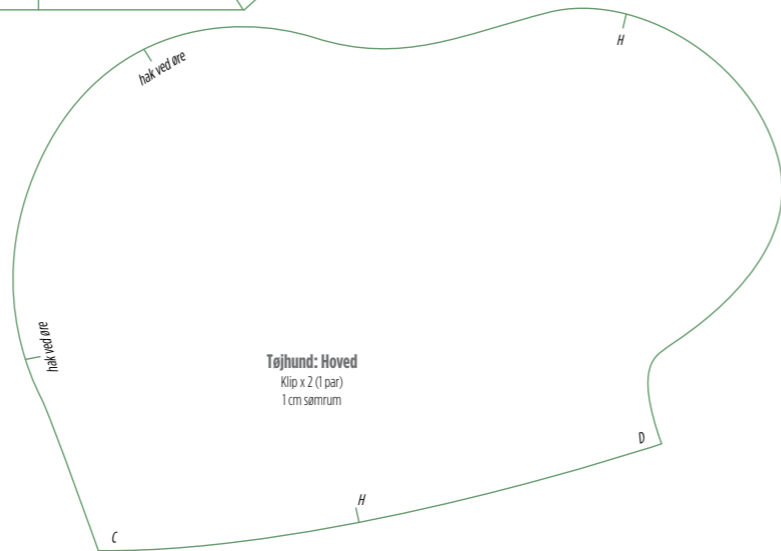
læg en lille klud af sweater på stoffet

læg en lille klud af sweater på stoffet

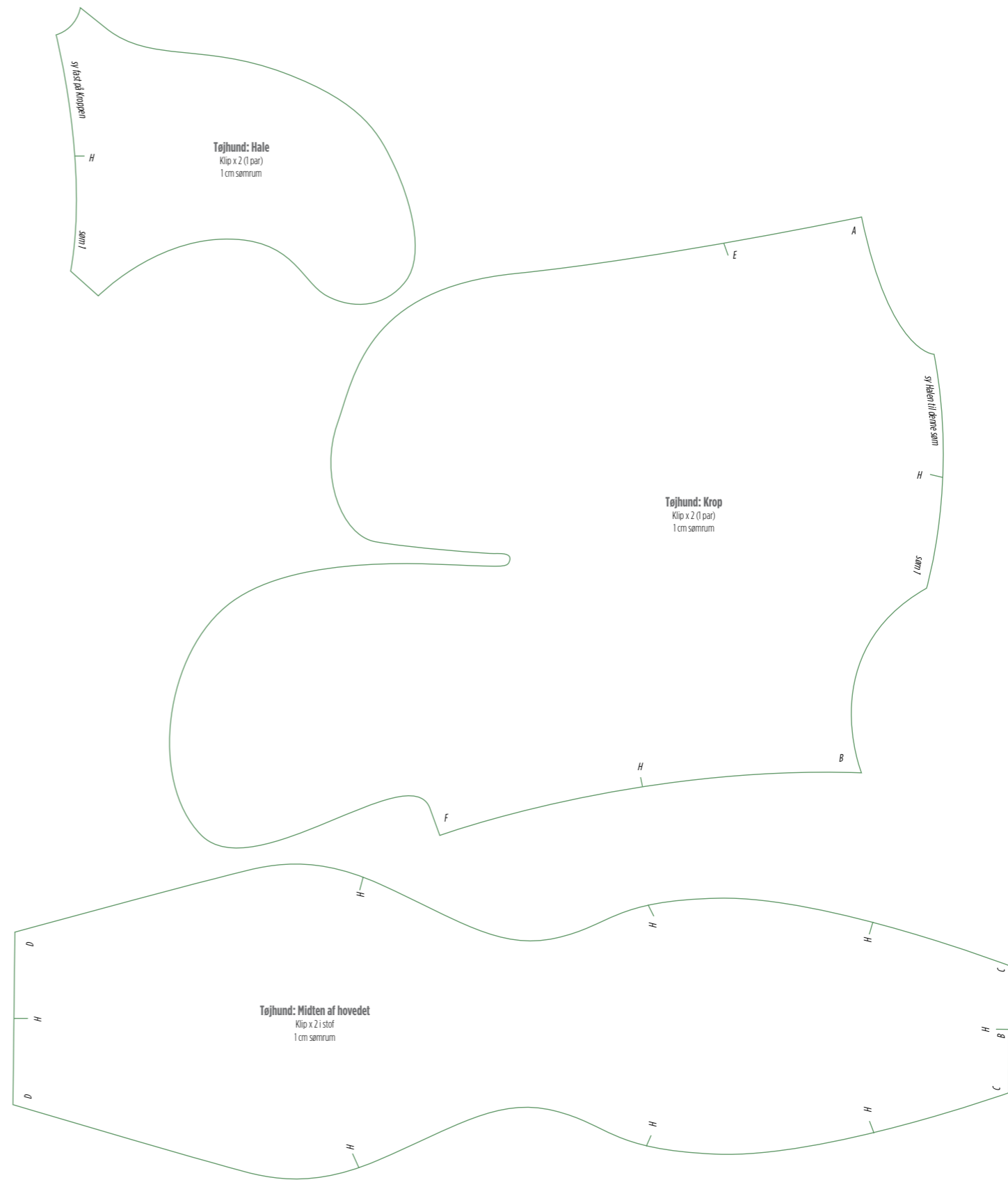
**Tøjhund: Bund**  
Klip x 1 i stof  
1 cm sømrum



**Tøjhund: Øre**  
Klip x 4 i stof  
1 cm sømrum



**Tøjhund: Hoved**  
Klip x 2 (1 par)  
1 cm sømrum



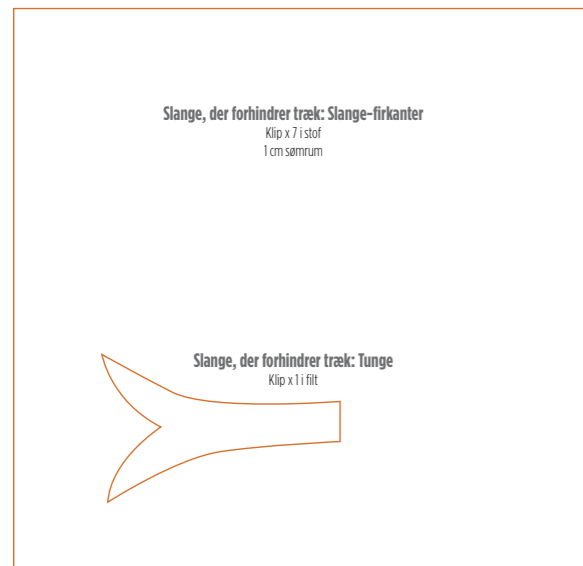
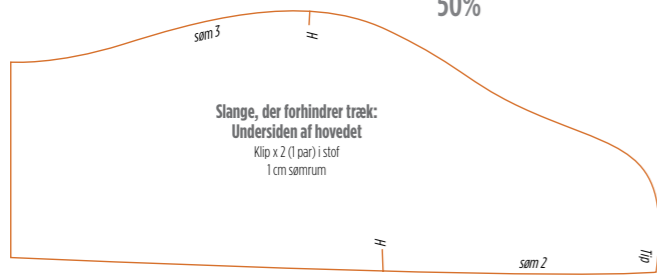
**Tøjhund: Hale**  
Klip x 2 (1 par)  
1 cm sømrum

**Tøjhund: Krop**  
Klip x 2 (1 par)  
1 cm sømrum

**Tøjhund: Midten af hovedet**  
Klip x 2 i stof  
1 cm sømrum

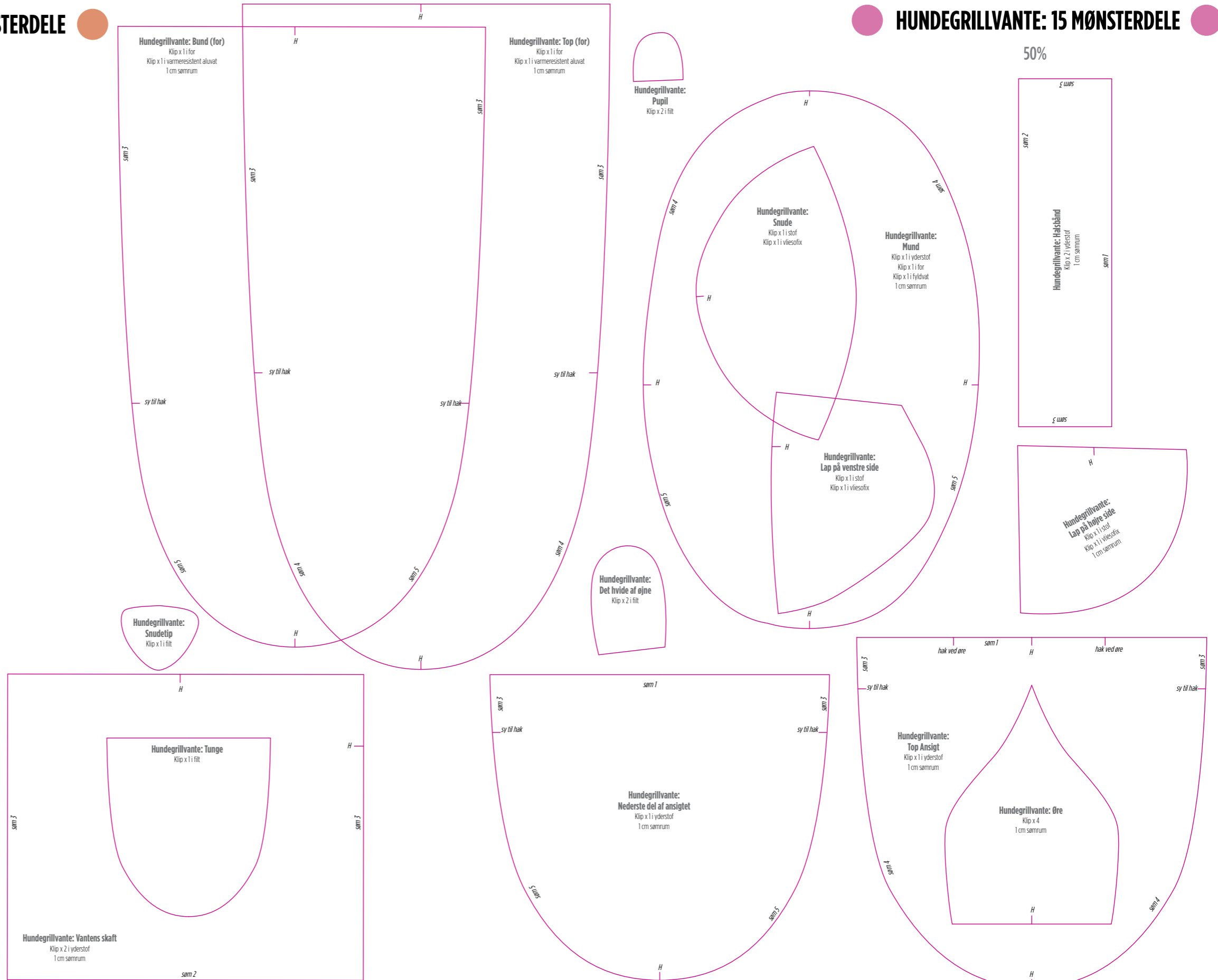
# SLANGE, DER FORHINDRER TRÆK: 6 MØNSTERDELE

50%



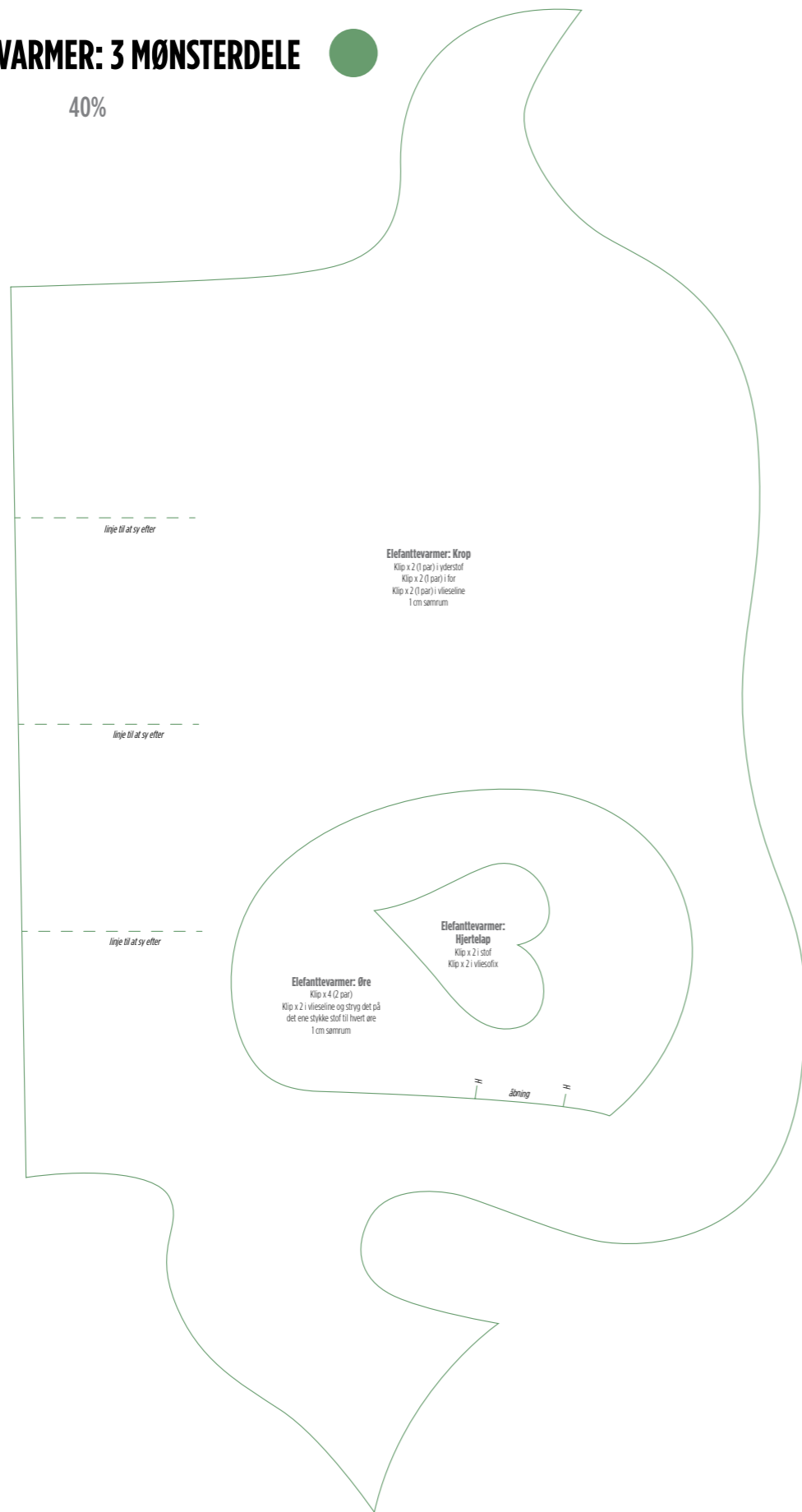
# HUNDEGRILLVANTE: 15 MØNSTERDELE

50%



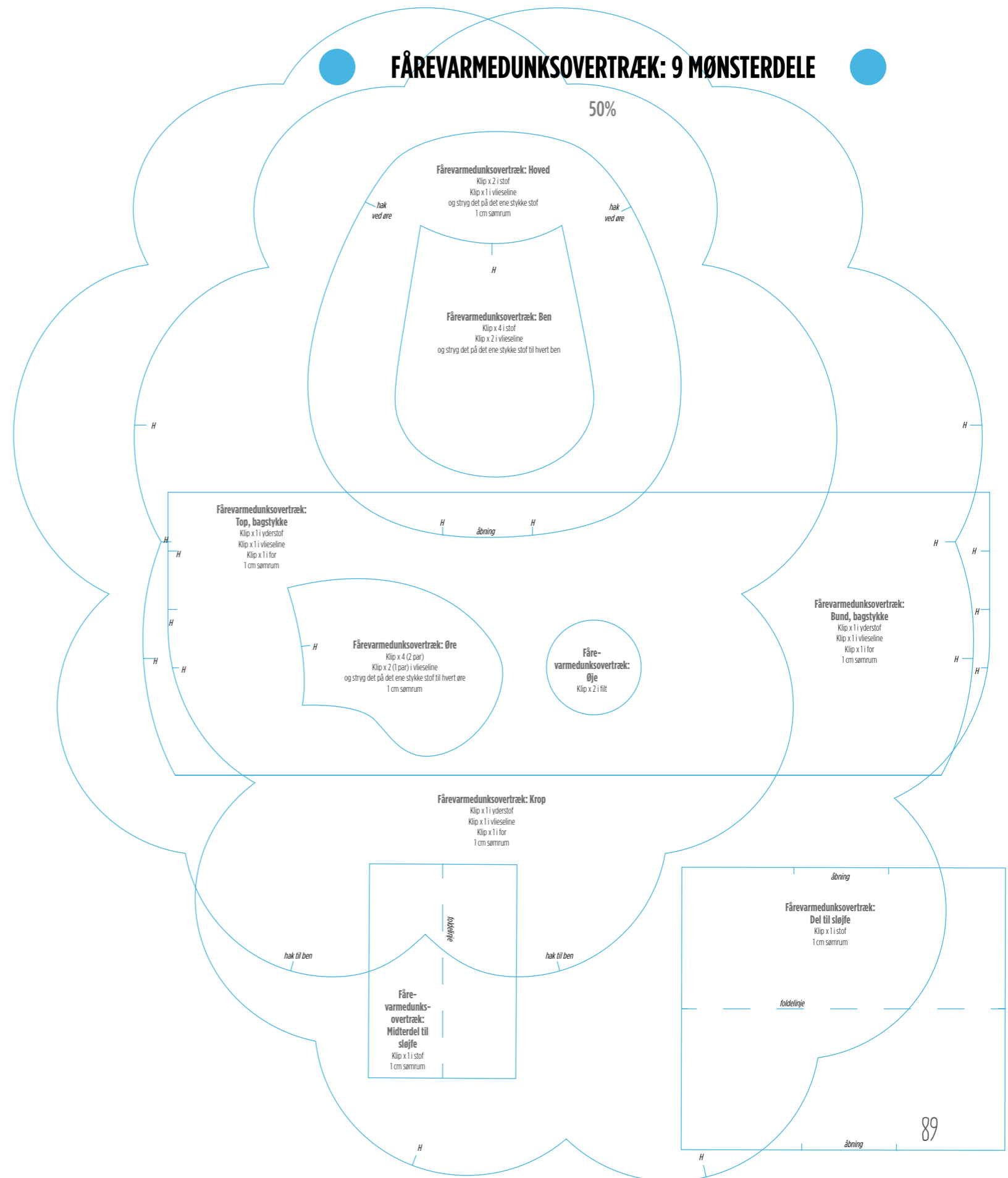
**ELEFANTEVARMER: 3 MØNSTERDELE**

40%



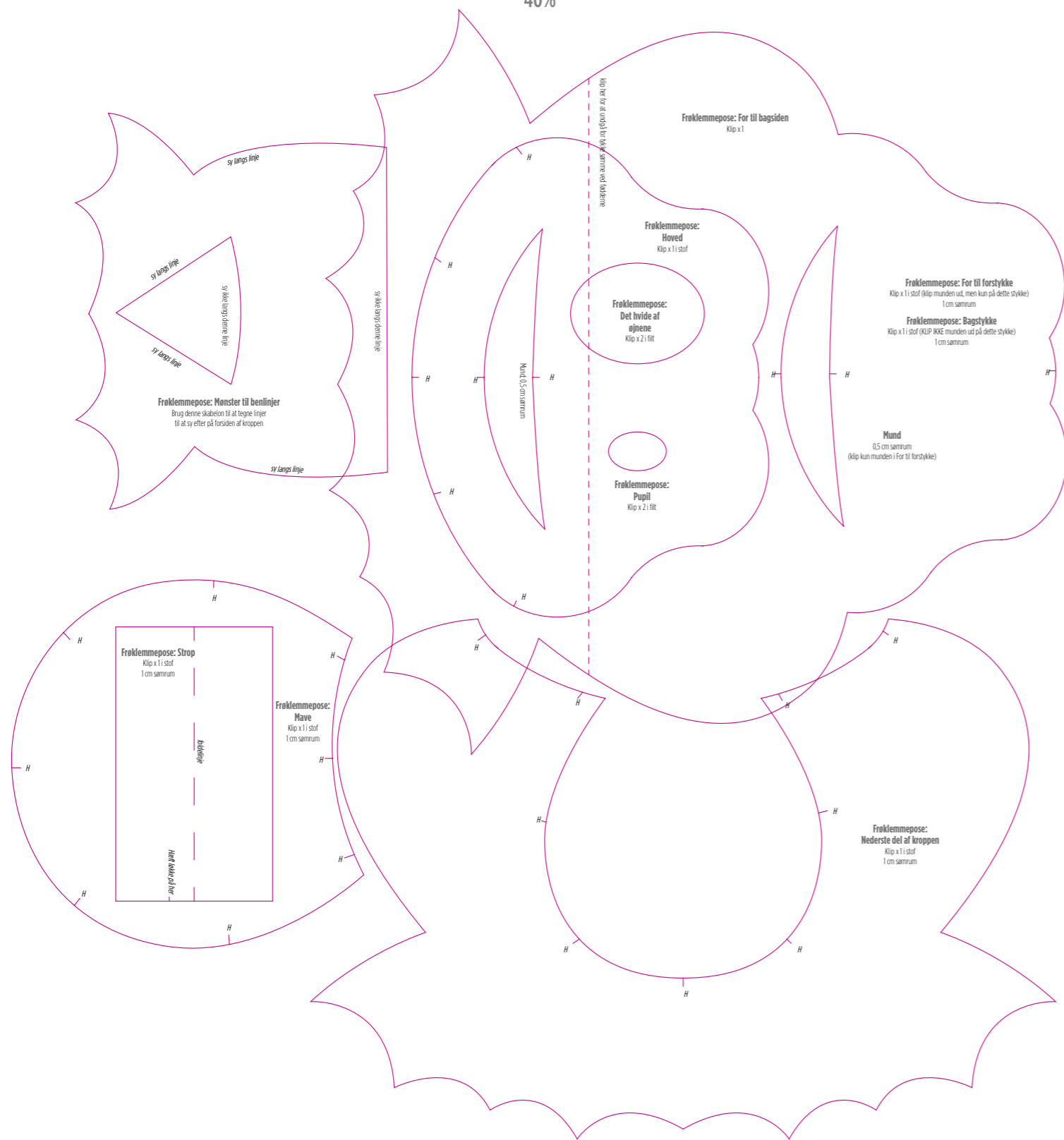
**FÅREVARMEDUNKSOVERTRÆK: 9 MØNSTERDELE**

50%



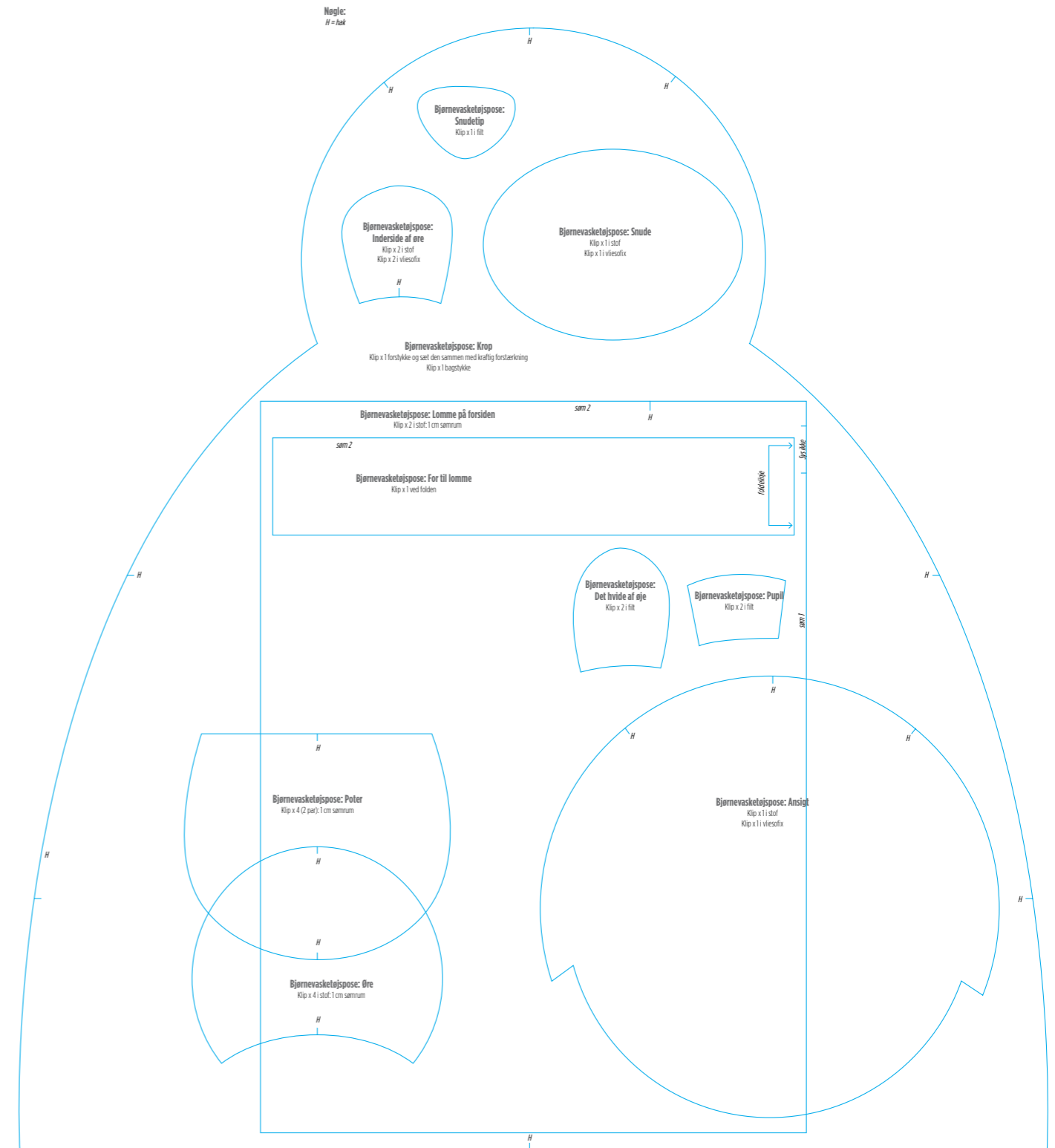
# FRØKLEMMEPOSE: 8 MØNSTERDELE

40%



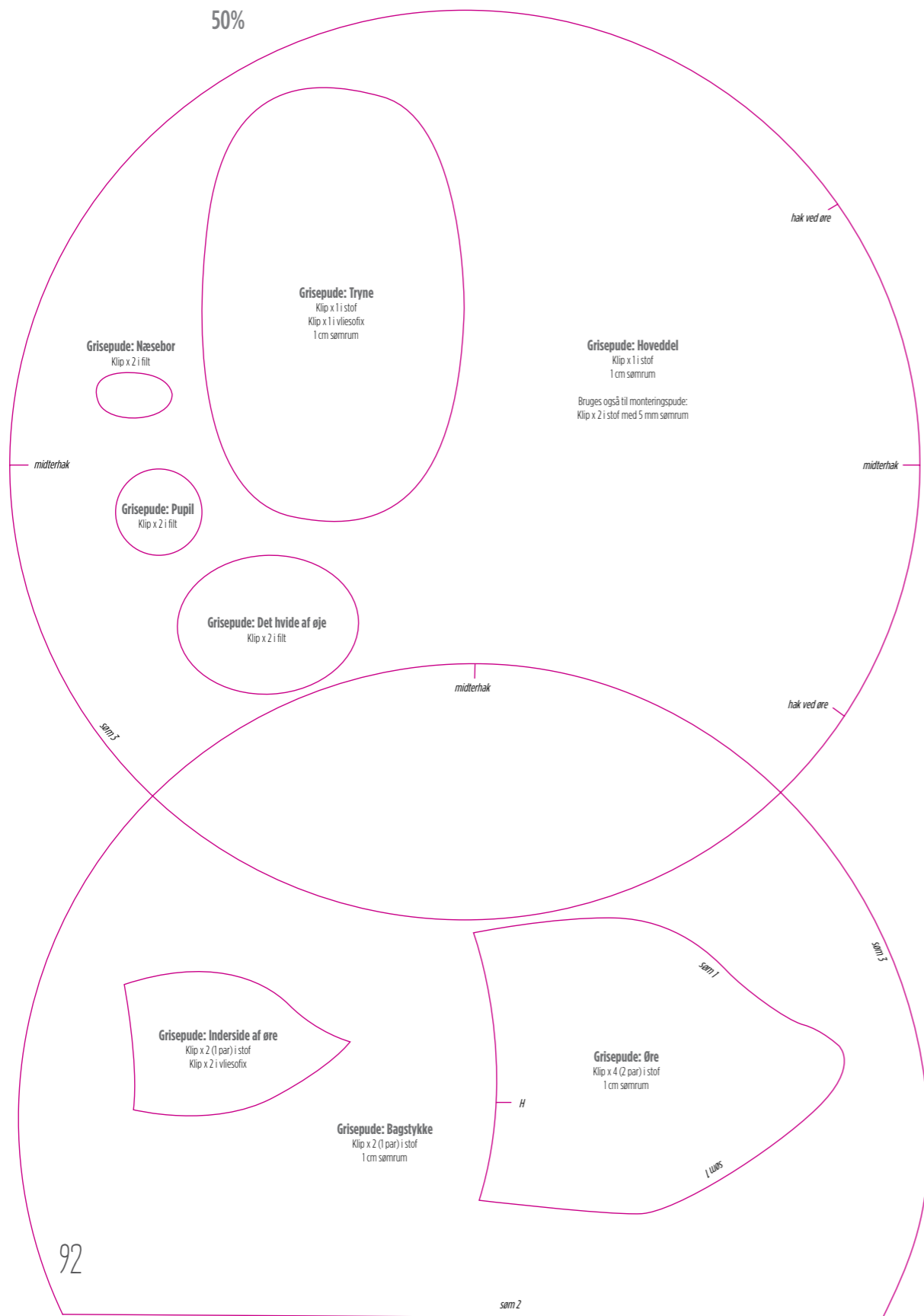
# BJØRNEVASKETØJSPOSE: 11 MØNSTERDELE

40%



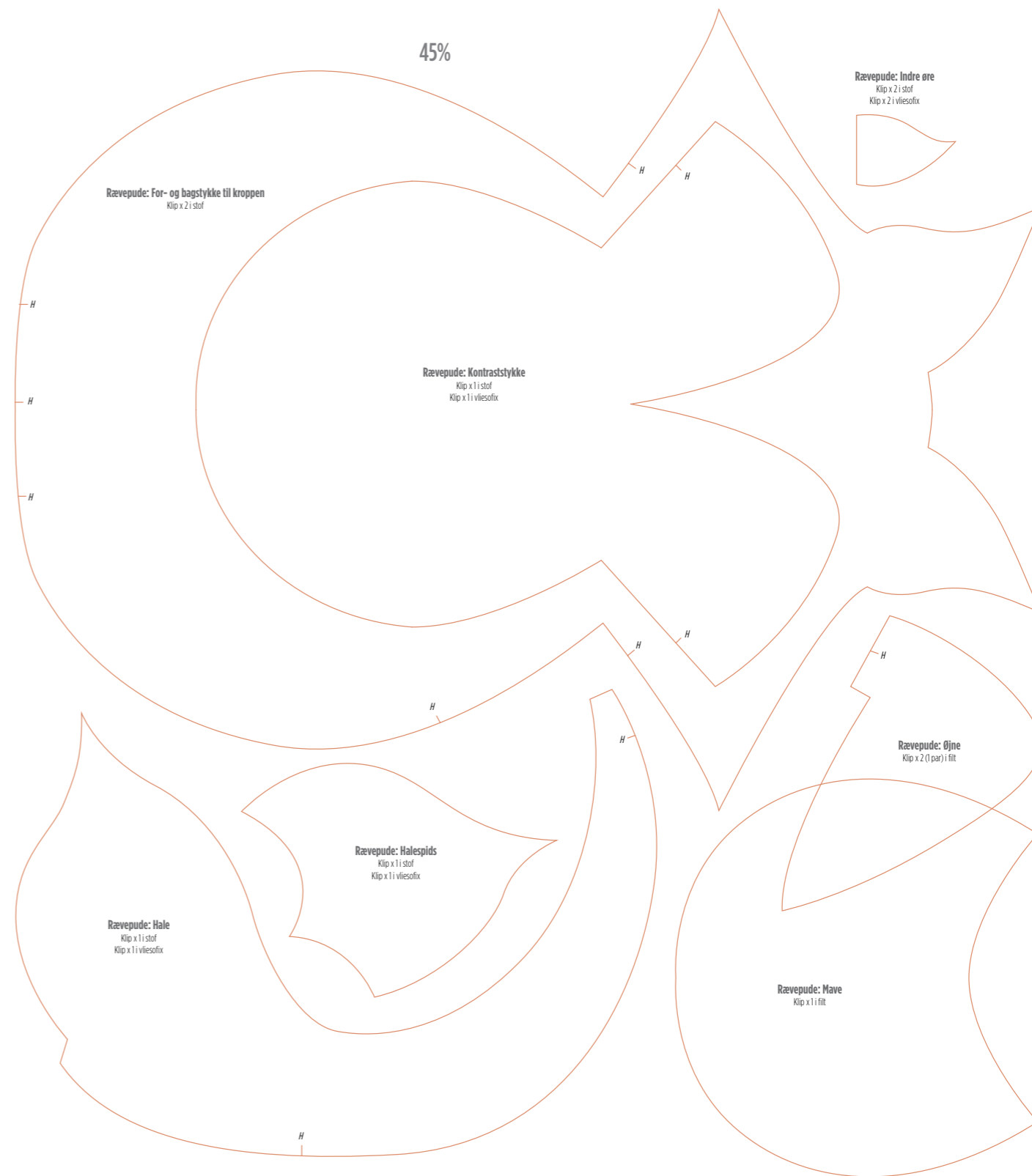
**GRISEPUDE: 8 MØNSTERDELE (BRUG MØNSTRET TIL SLØJFE TIL FÅREVARMEDUNKSOVERTRÆKKET, S. 89)**

50%



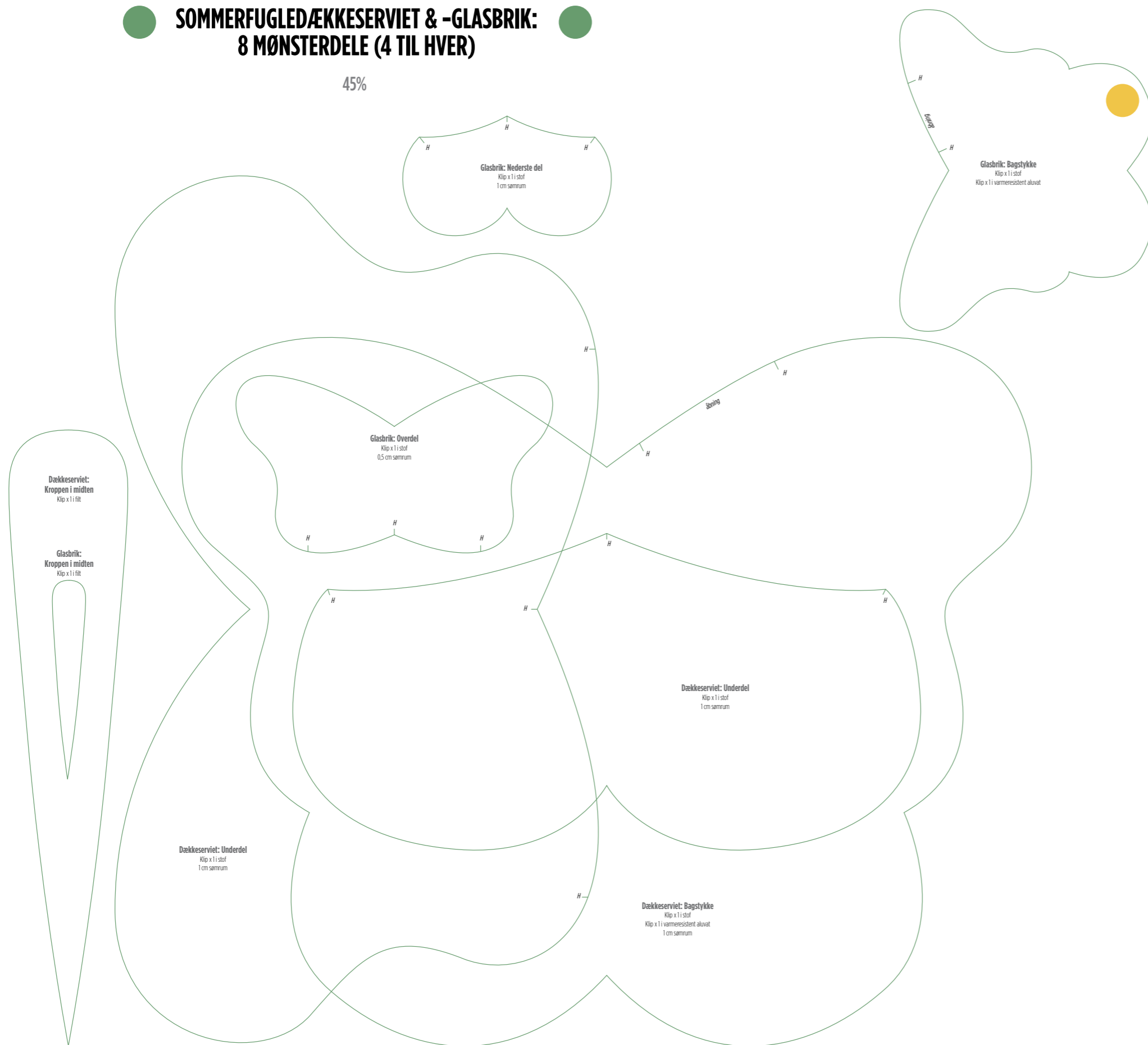
**RÆVEPUDE: 7 MØNSTERDELE**

45%



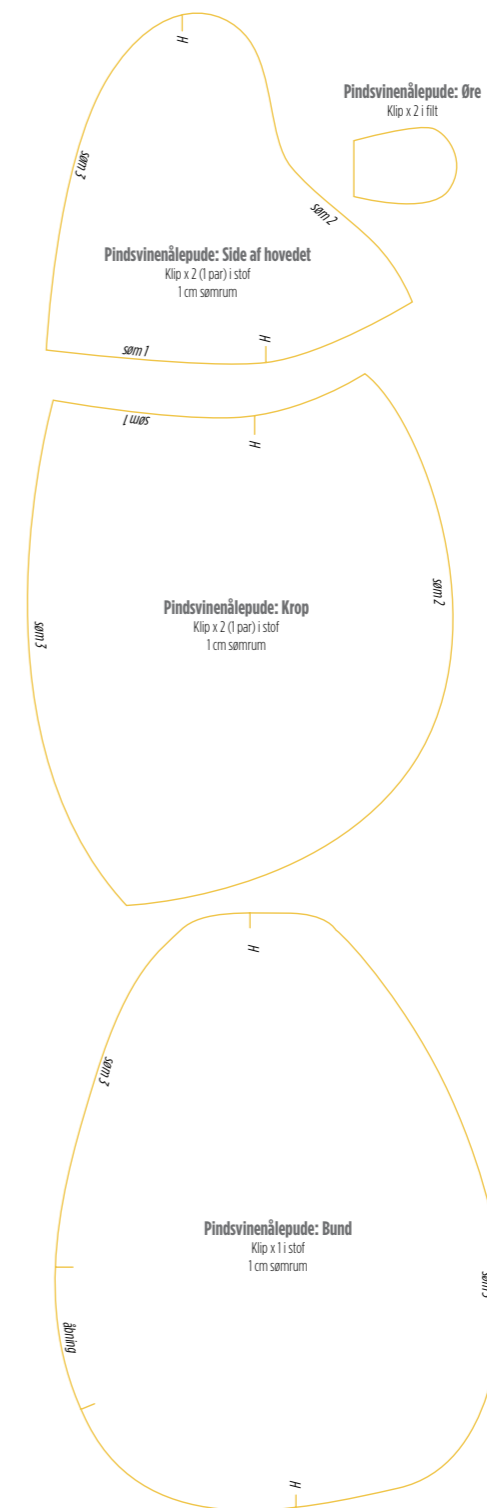
**SOMMERFUGLEDÆKKESERVET & -GLASBRIK:  
8 MØNSTERDELE (4 TIL HVER)**

45%



**PINDSVINENÅLEPUDE: 4 MØNSTERDELE**

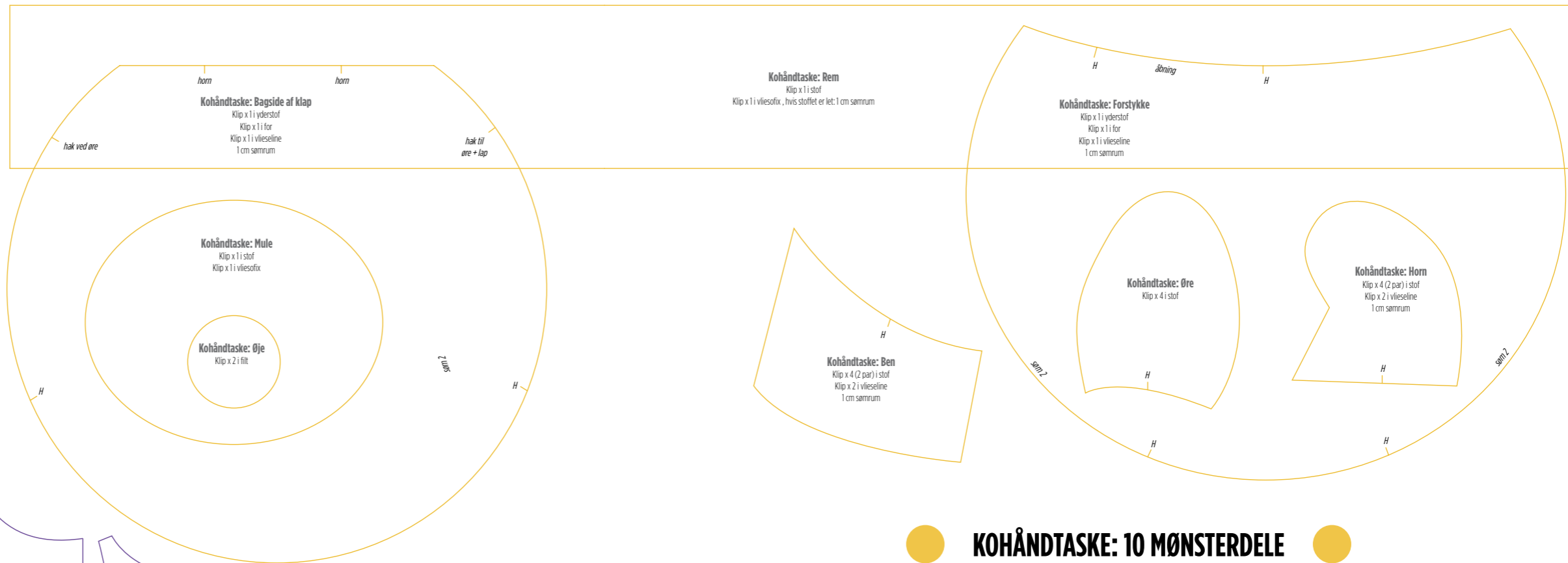
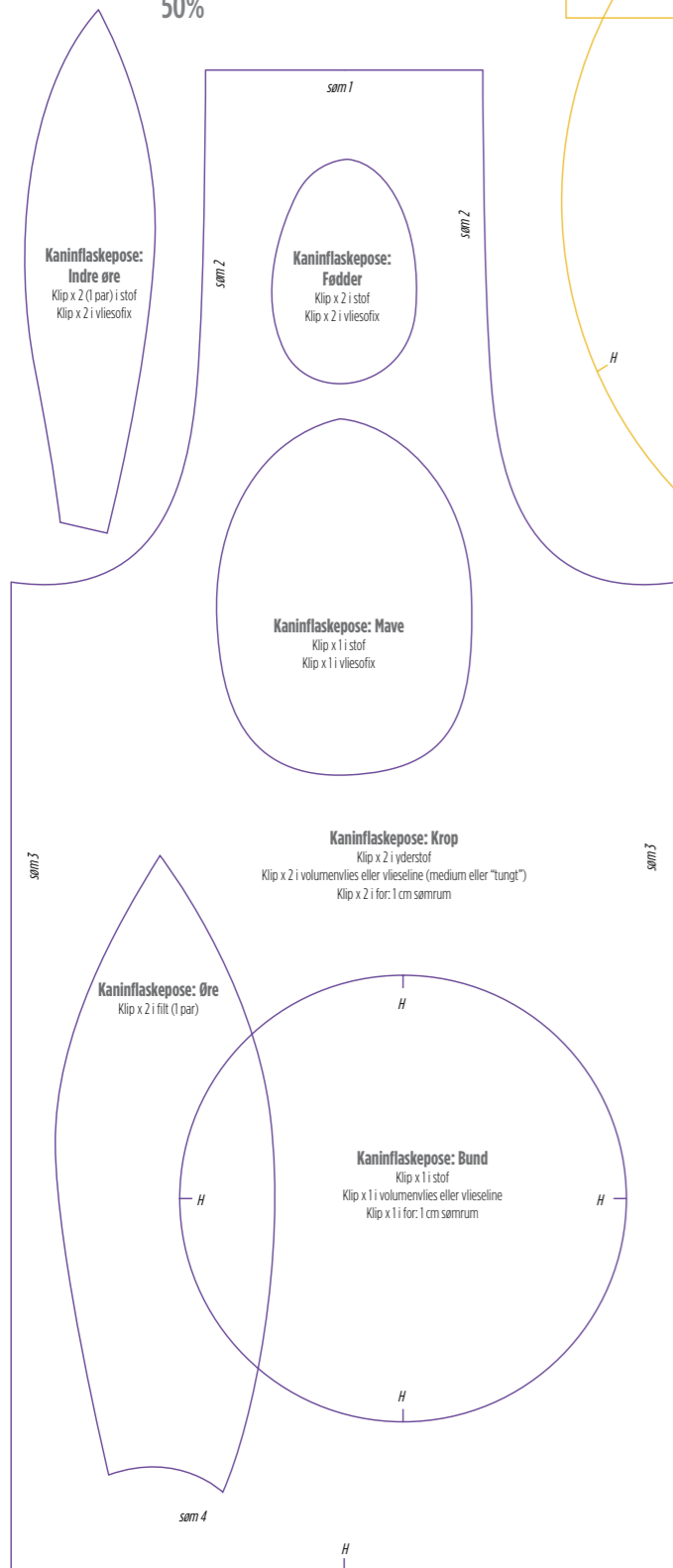
50%





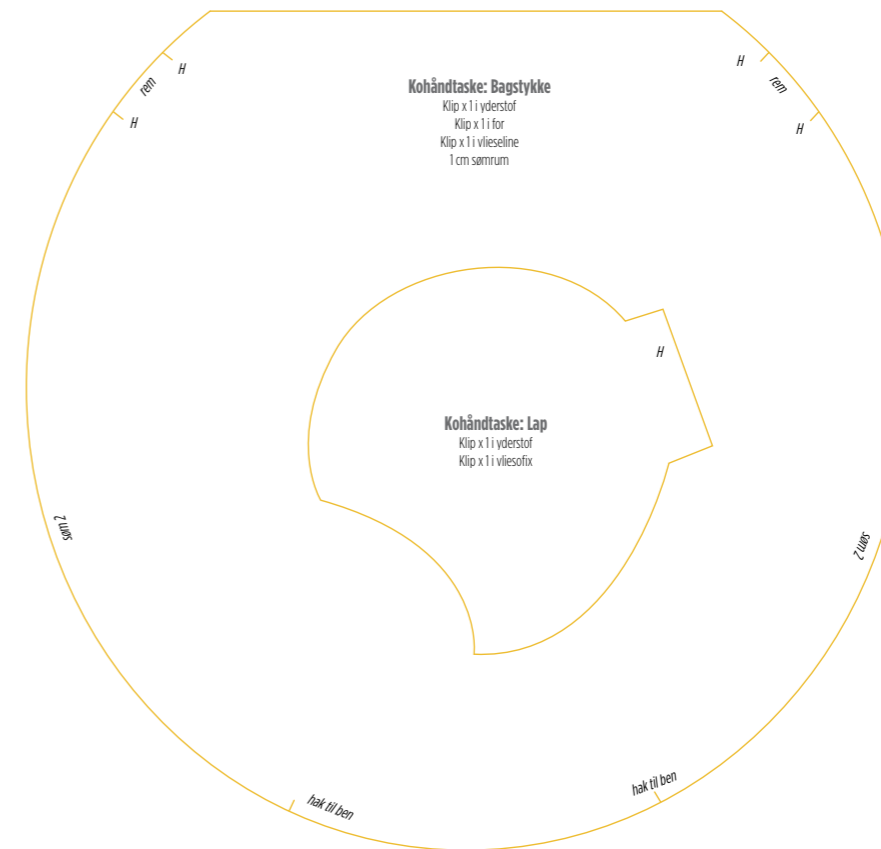
# KANINFLASKEPOSE: 10 MØNSTERDELE

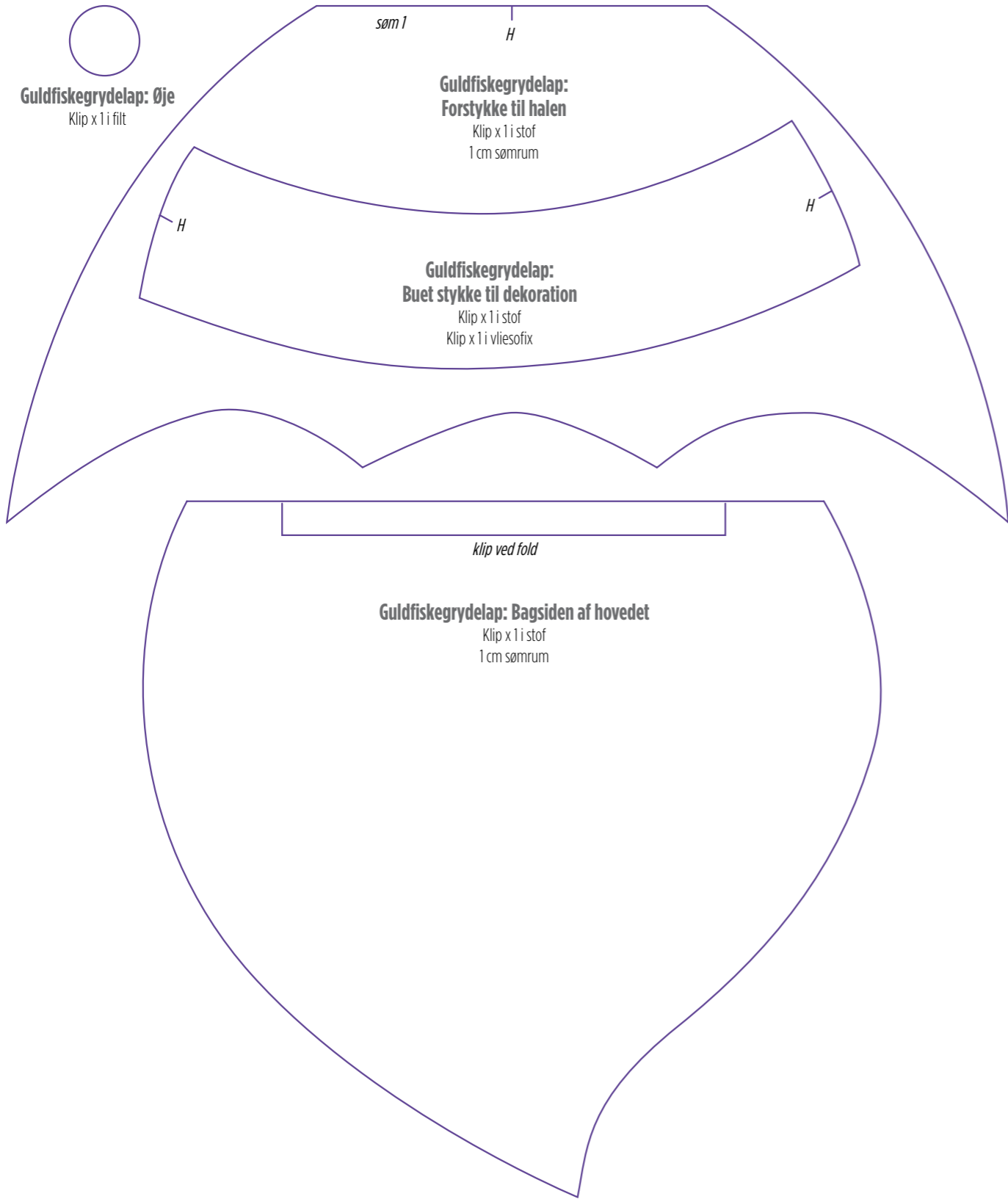
50%



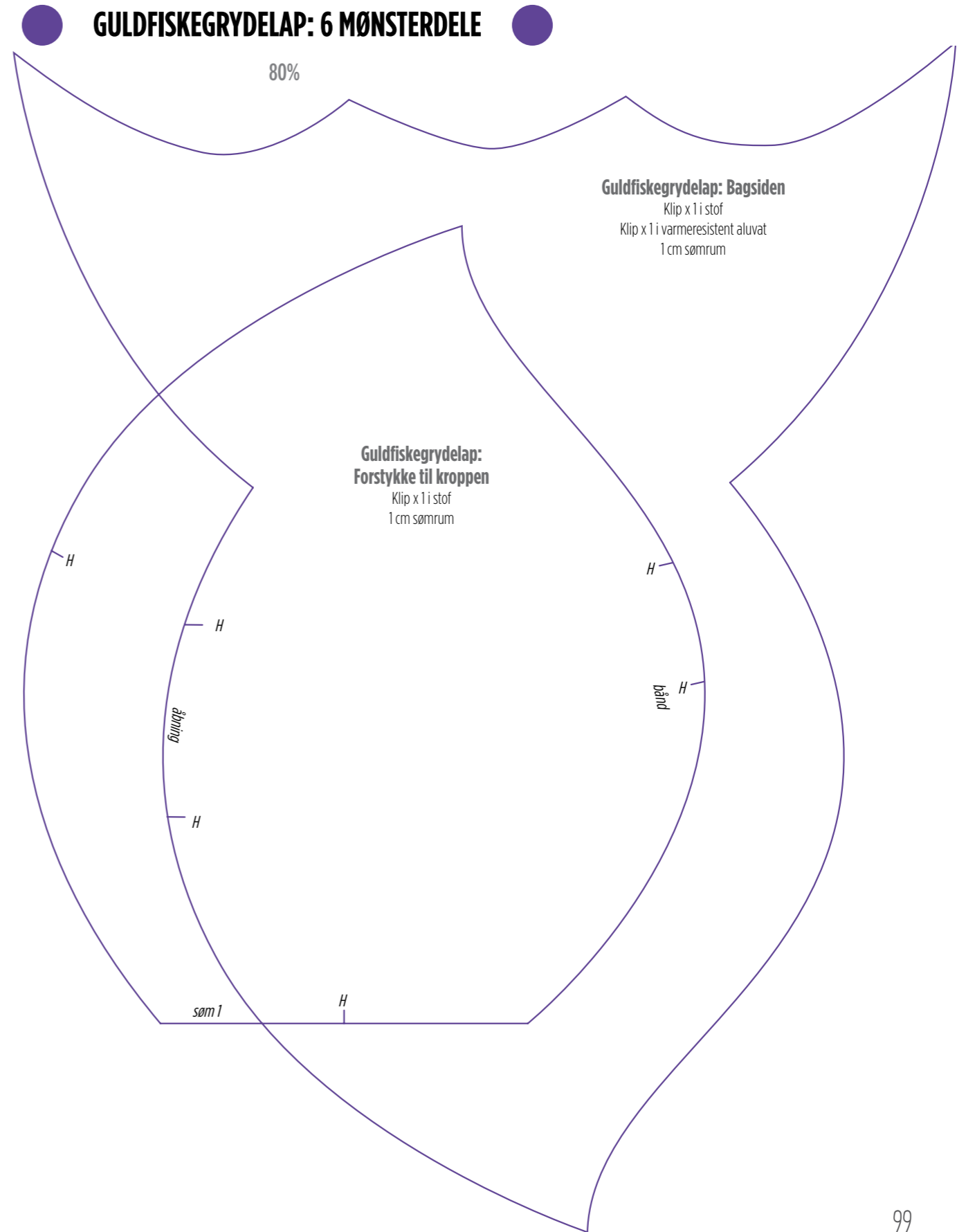
# KOHÅNDTASKE: 10 MØNSTERDELE

50%



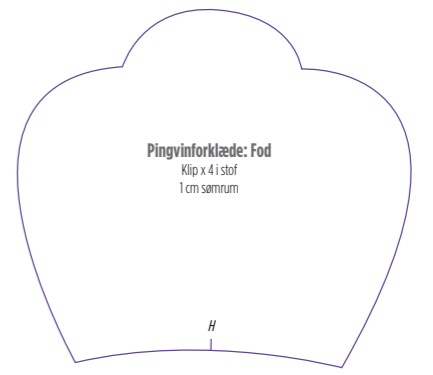
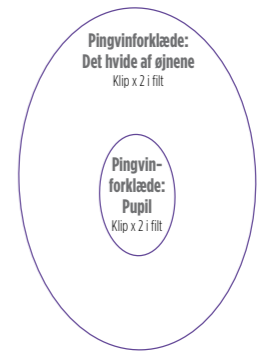
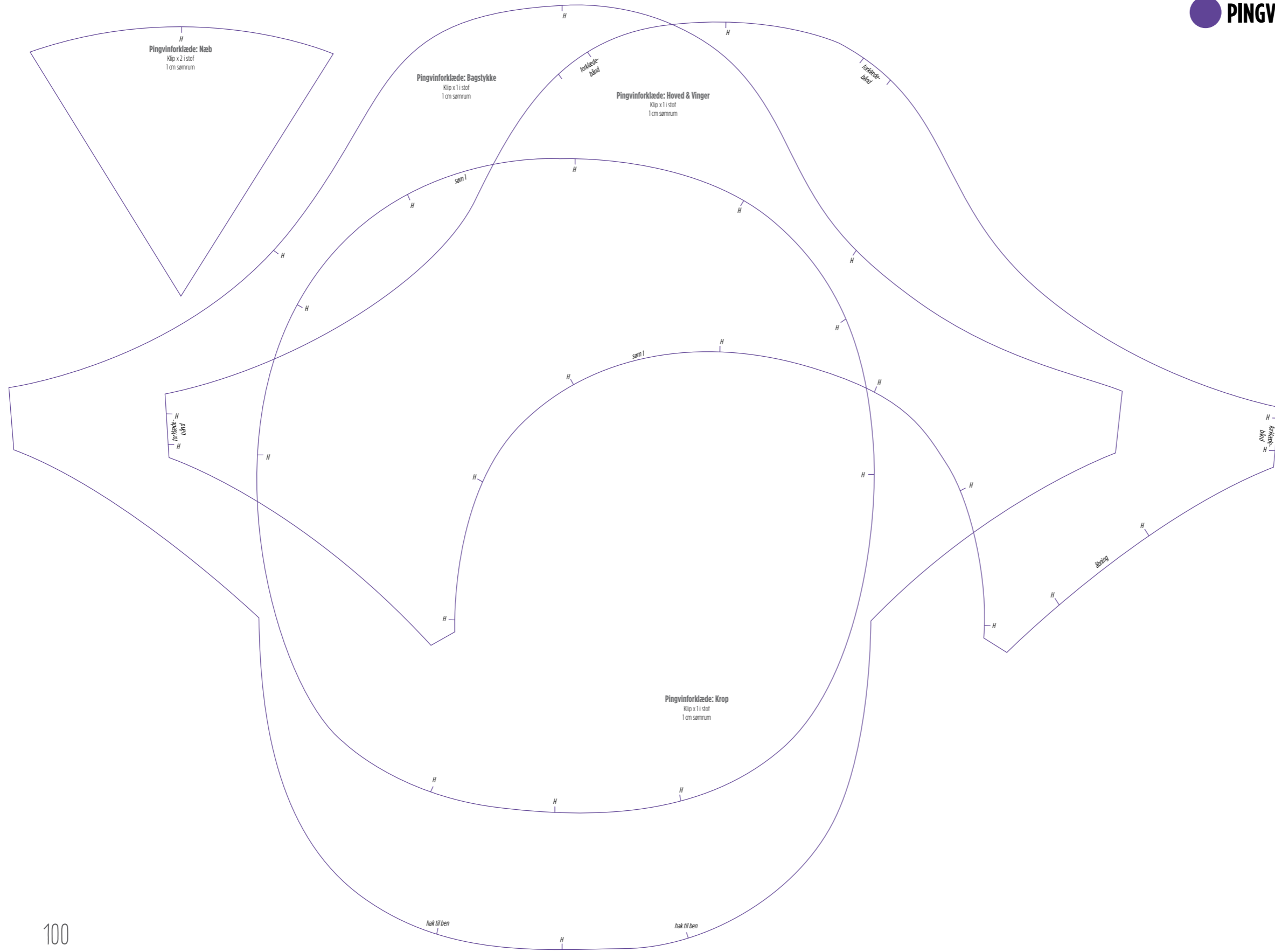


## GULDFISKEGRYDELAP: 6 MØNSTERDELE



# ● PINGVINFORKLÆDE: 7 MØNSTERDELE ●

45%



## MUSEÆGGEVARMER: 5 MØNSTERDELE

100%

